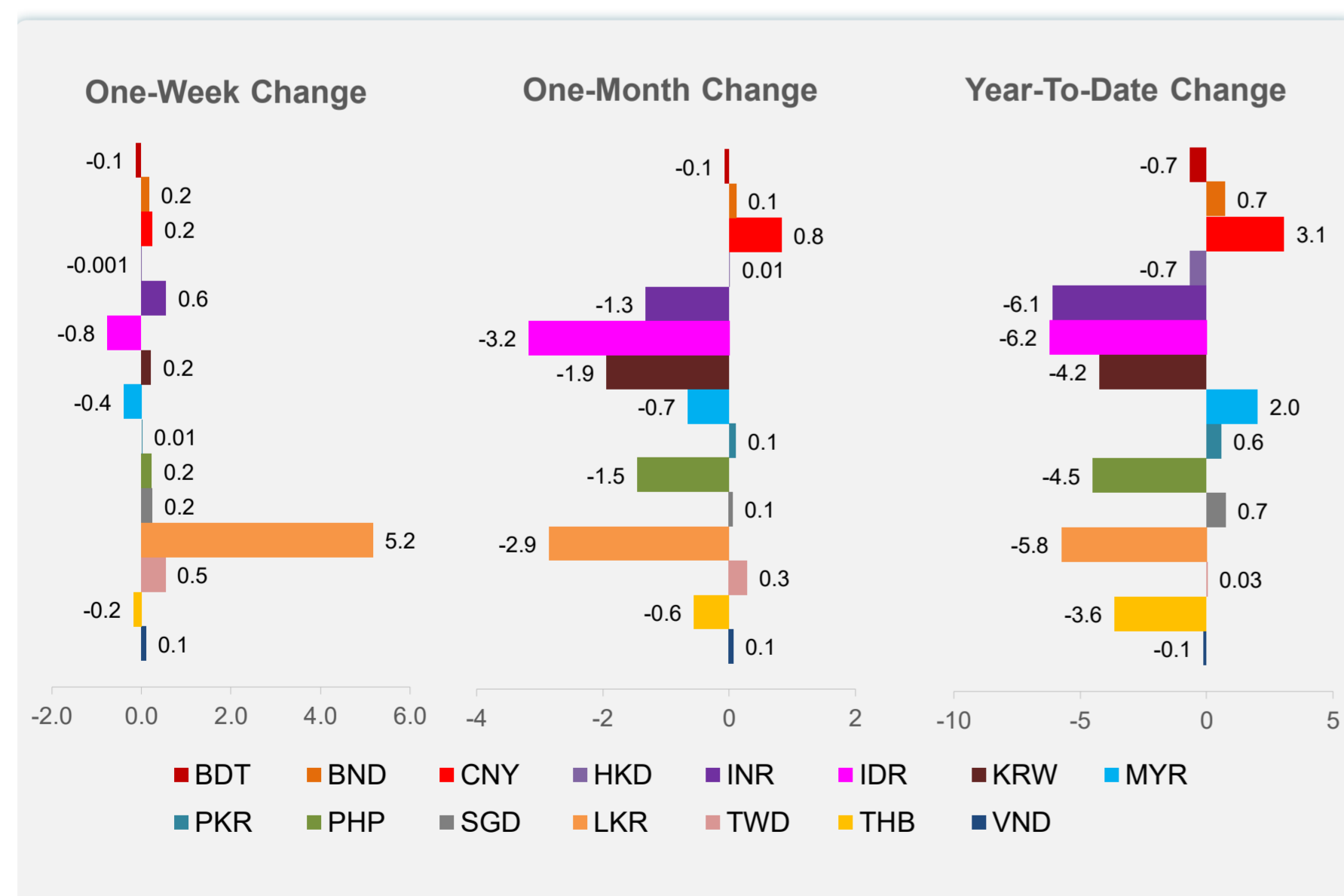
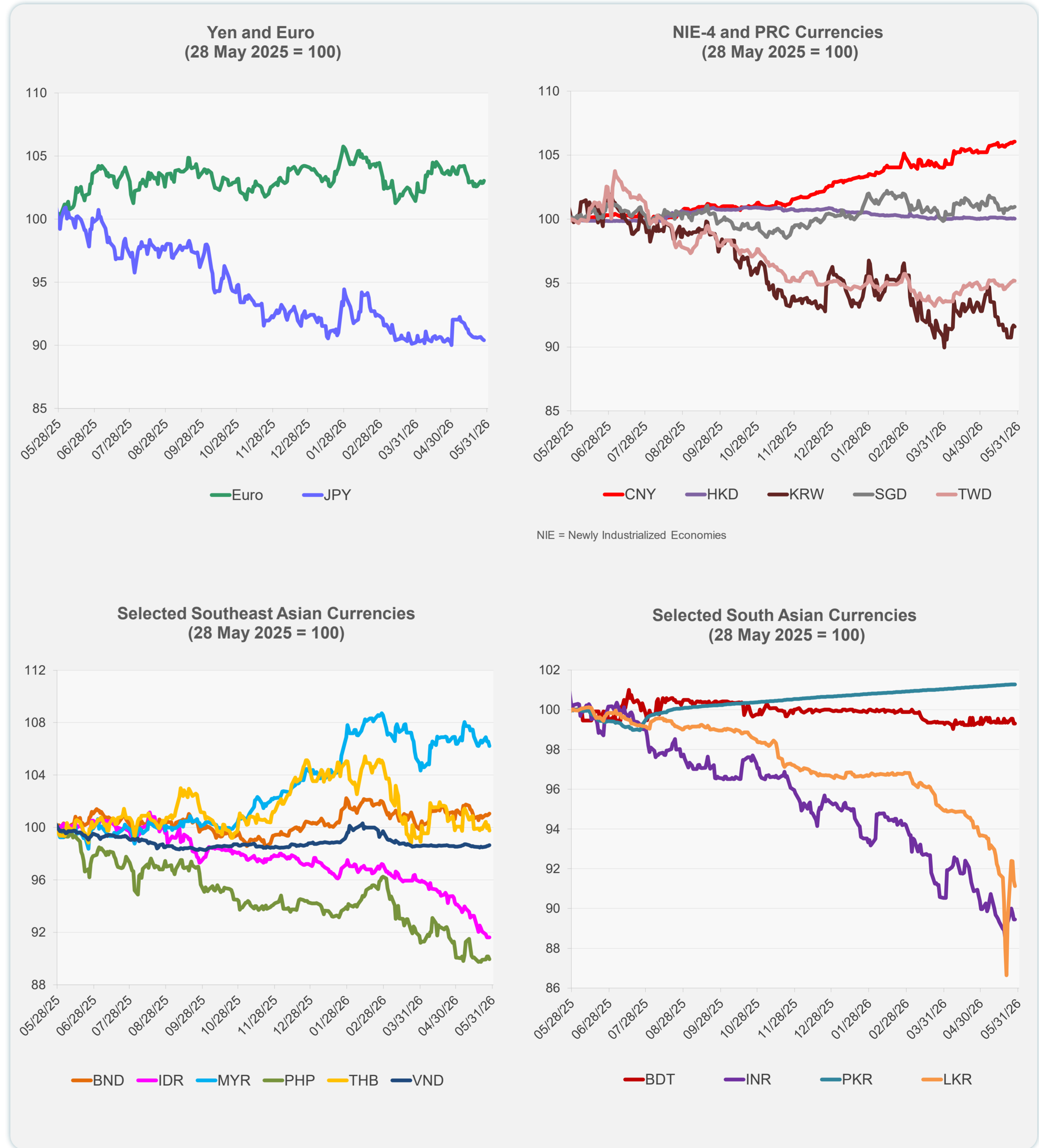
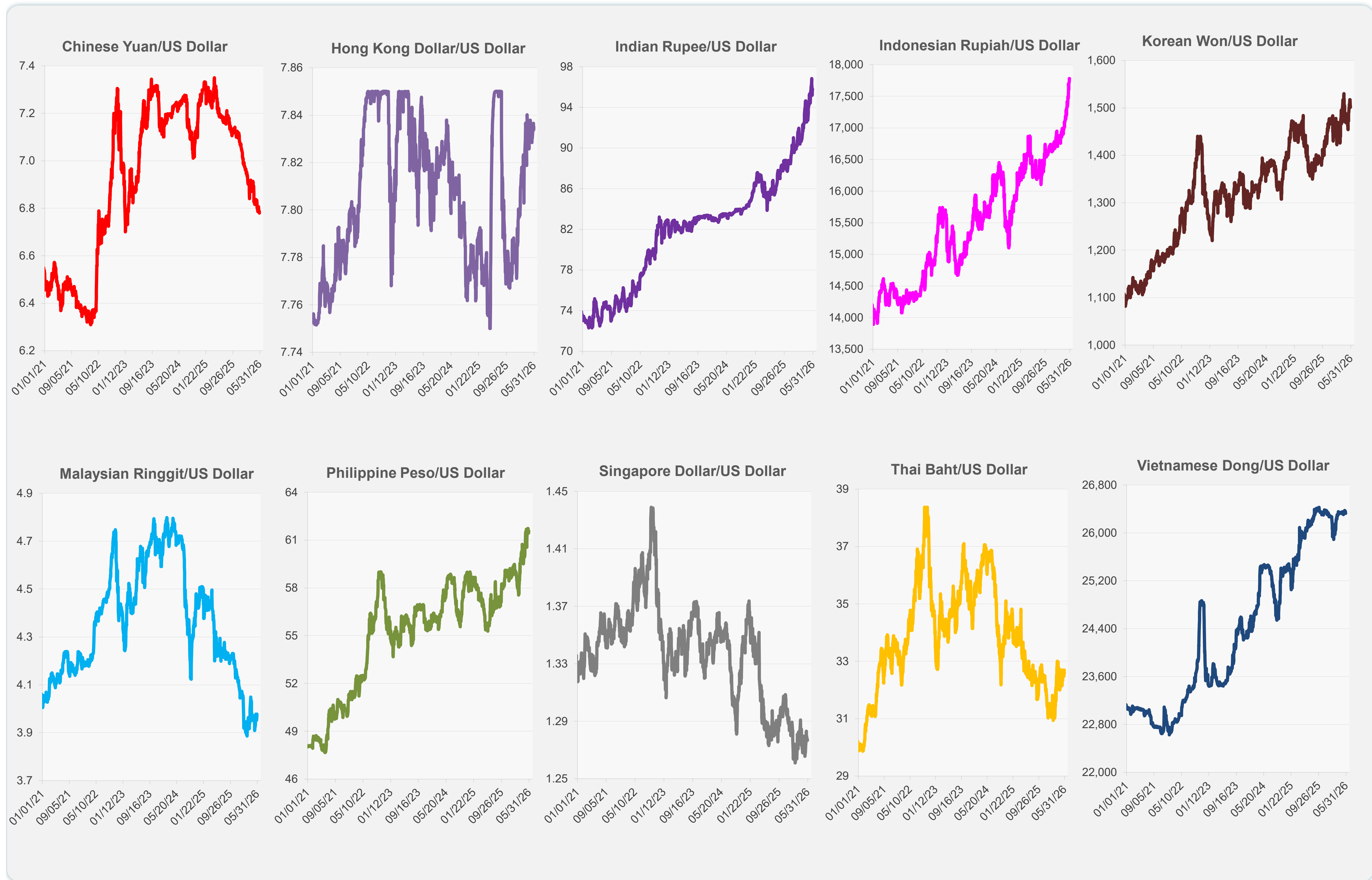


	Latest Closing	% change from Previous Day	% change from 01-Jan-26
Euro	0.86	0.18	-0.83
Japanese yen (JPY)	159.47	-0.07	-2.19
Bangladeshi taka (BDT)	123.05	0.00	-0.65
Brunei dollar (BND)	1.28	0.11	0.72
Chinese yuan (CNY)	6.78	0.02	3.07
Hong Kong dollar (HKD)	7.84	-0.02	-0.66
Indian rupee (INR)	95.79	0.00	-6.06
Indonesian rupiah (IDR)	17,780.00	0.00	-6.21
Korean won (KRW)	1,502.80	-0.11	-4.25
Malaysian ringgit (MYR)	3.98	-0.33	2.01
Pakistan rupee (PKR)	278.50	0.00	0.58
Philippine peso (PHP)	61.58	-0.24	-4.51
Singapore dollar (SGD)	1.28	0.06	0.74
Sri Lanka rupee (LKR)	328.50	-0.30	-5.75
Taipei,China NT dollar (TWD)	31.43	-0.03	0.03
Thai baht (THB)	32.70	-0.42	-3.64
Vietnamese dong (VND)	26,327.50	0.05	-0.10



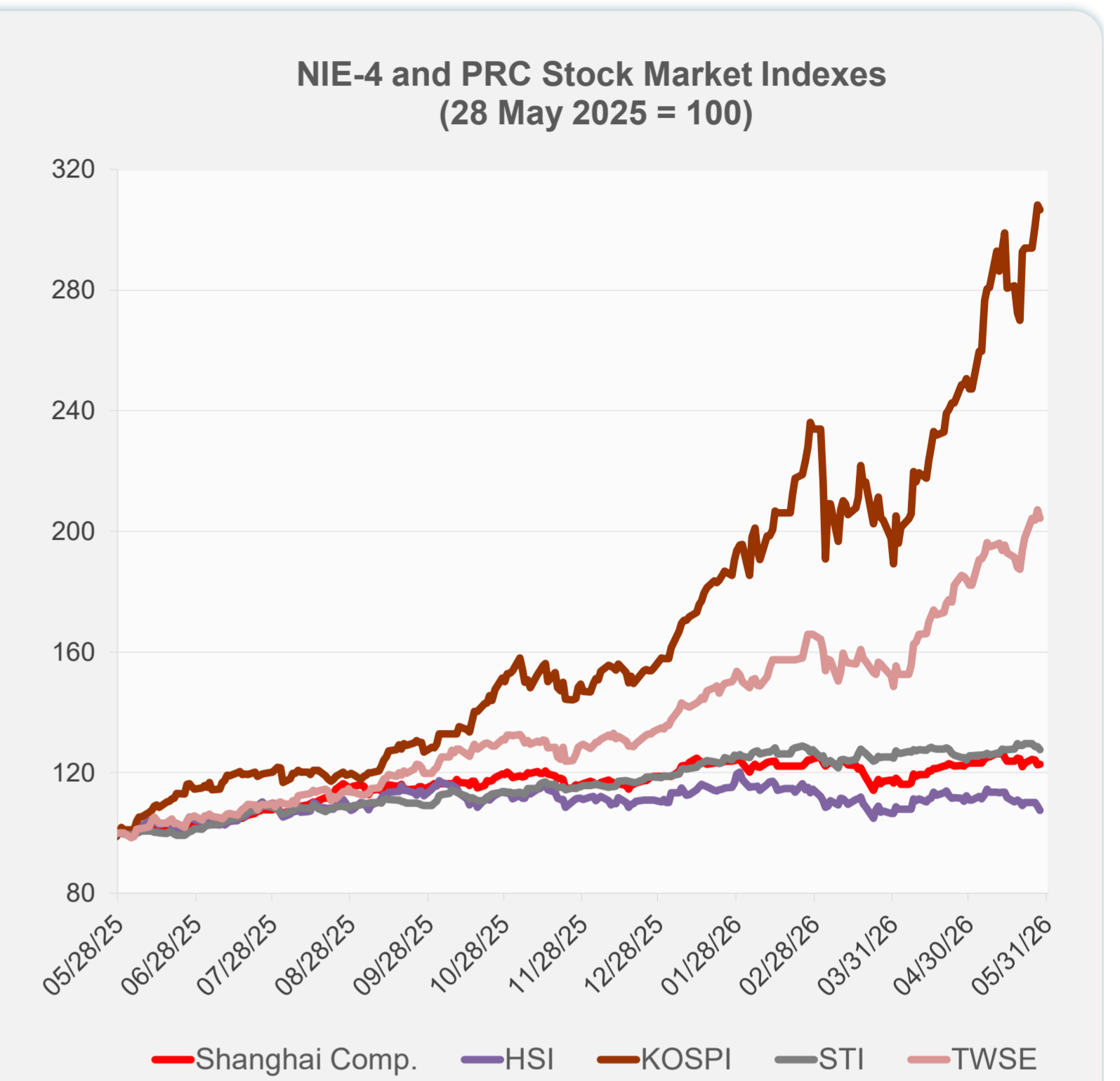
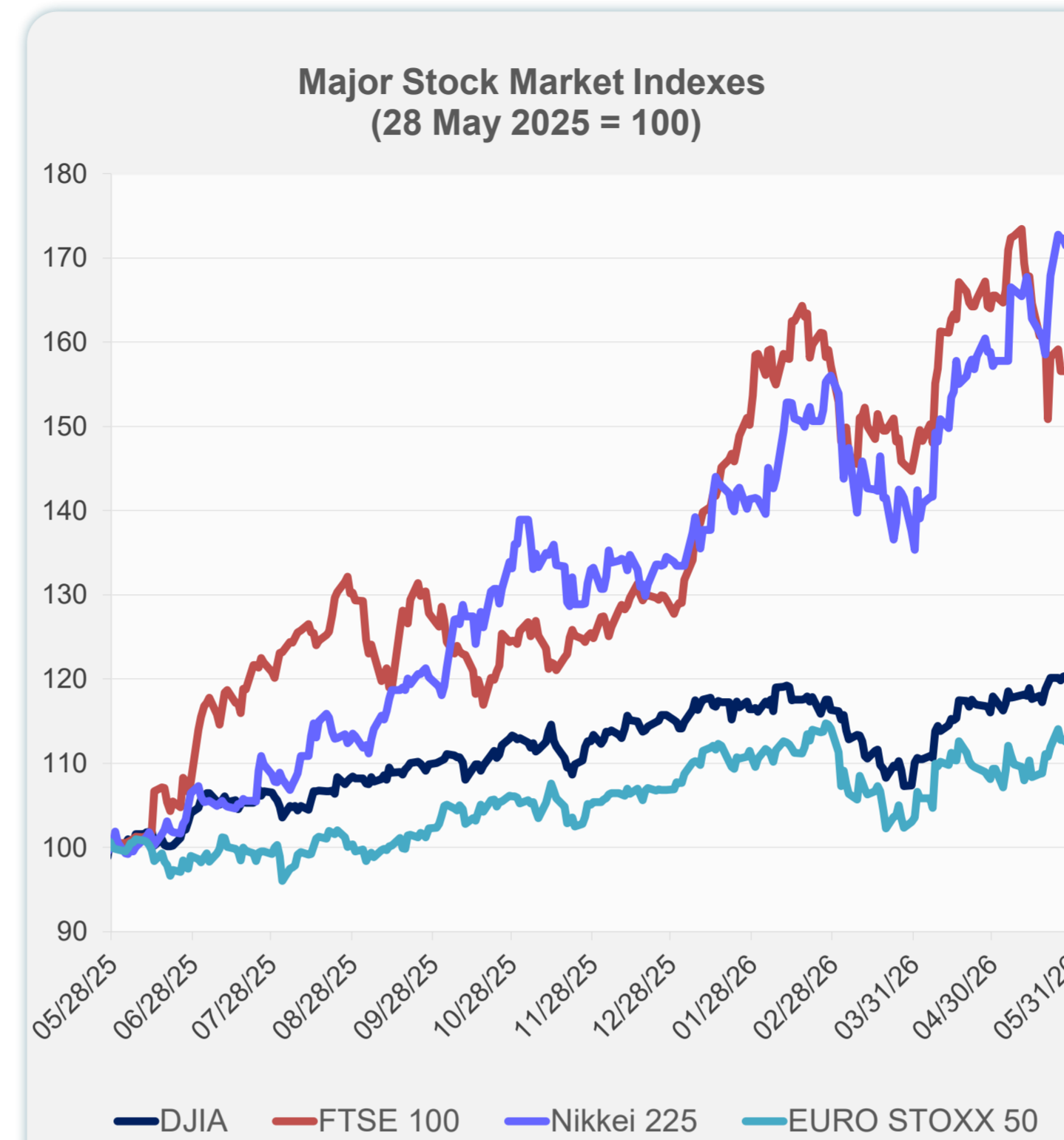
Note: Negative/Decreasing values indicate depreciation of local currency, and positive/increasing values indicate appreciation.
Source: ADB calculations using data from Bloomberg and Haver Analytics.



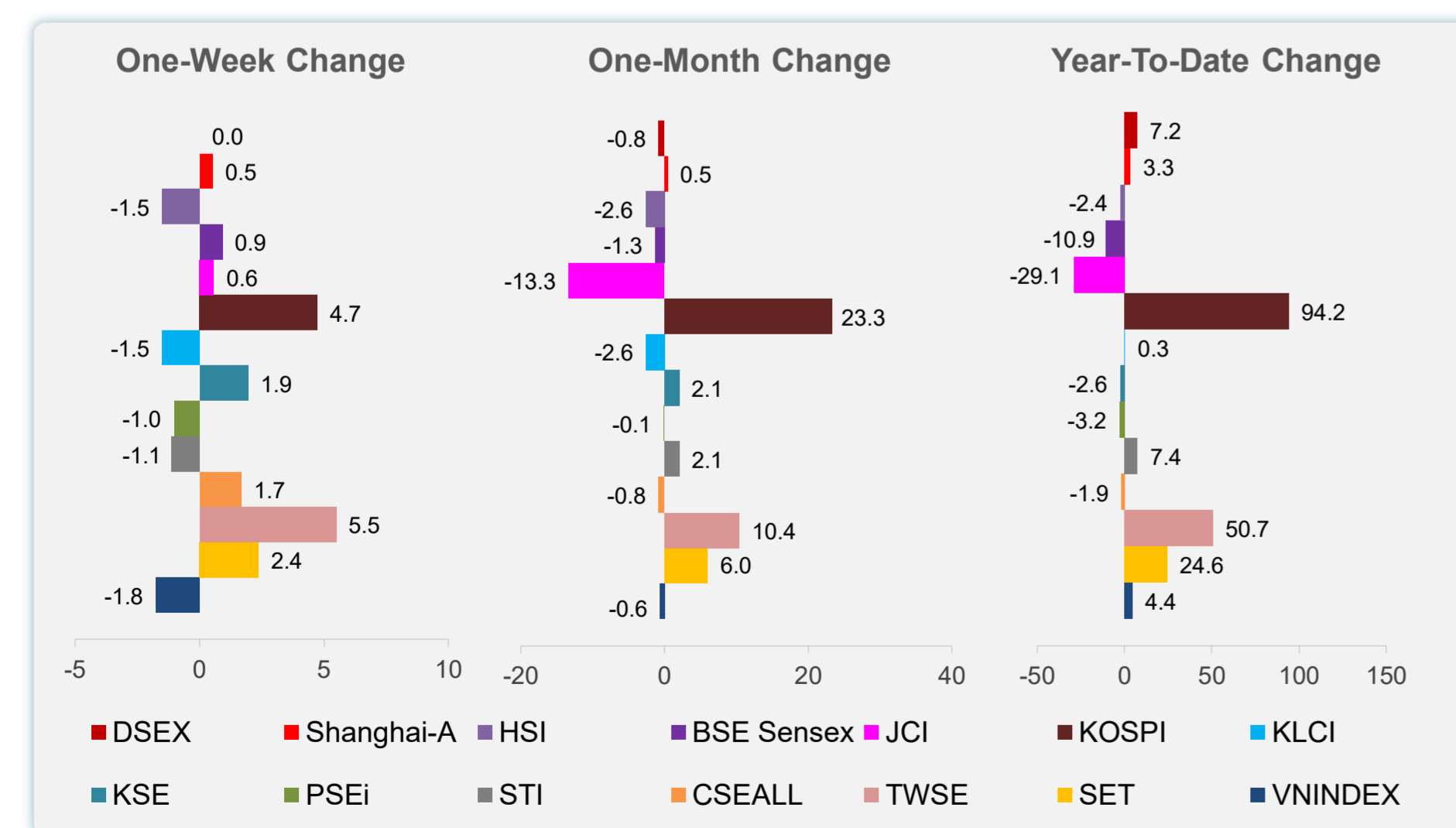
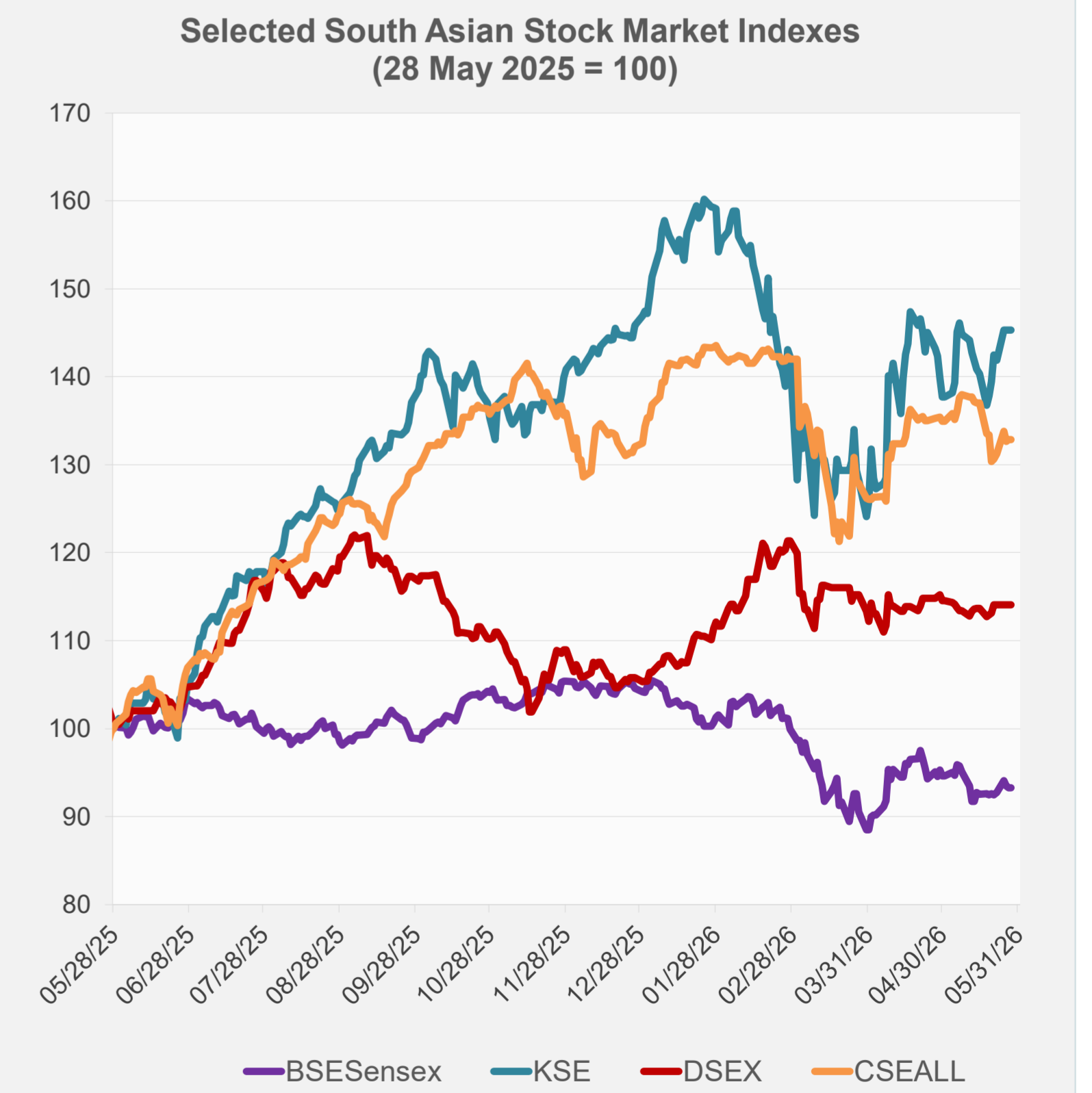
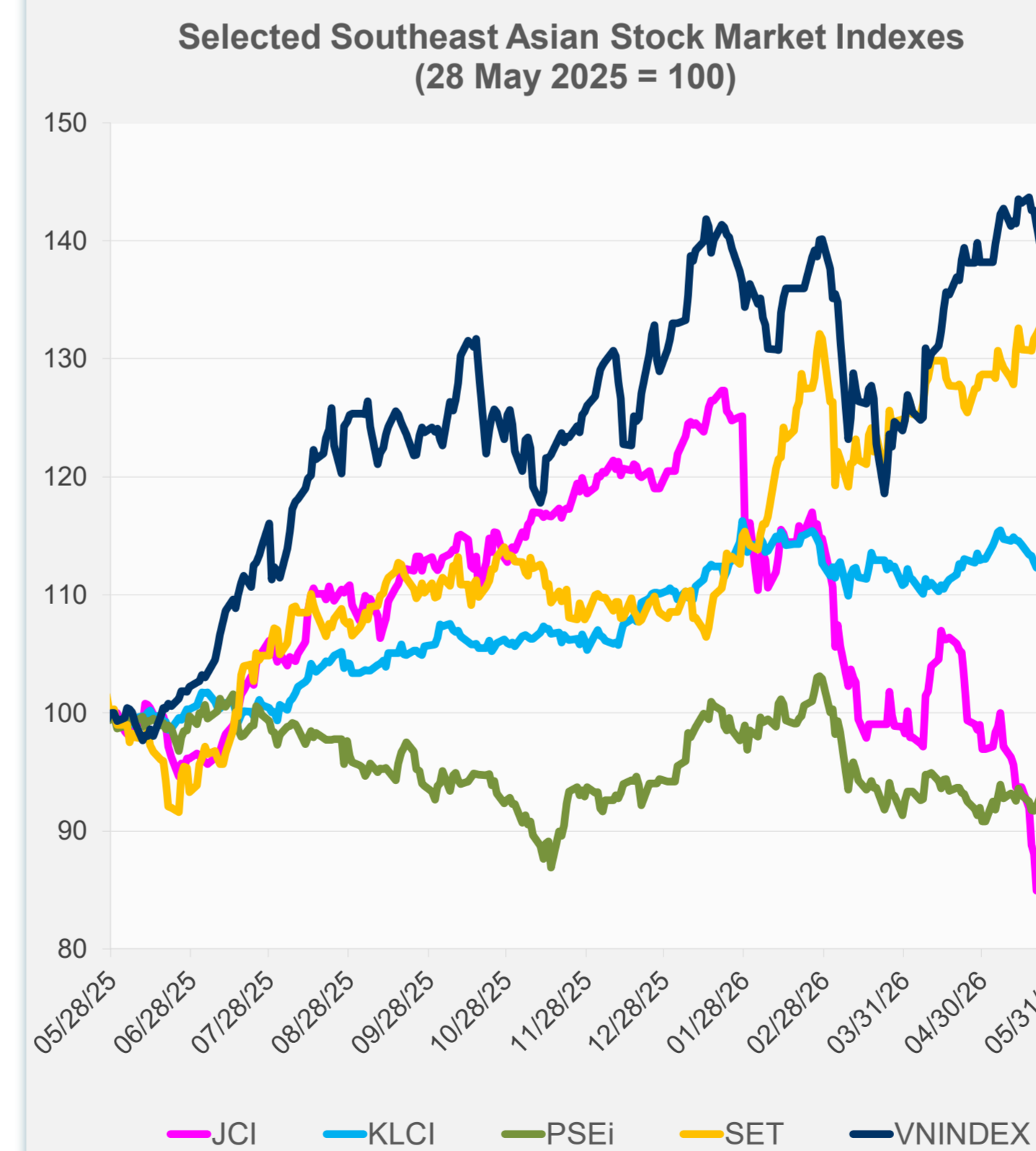
Source: Haver Analytics.

Daily Market Watch
STOCK INDEXES

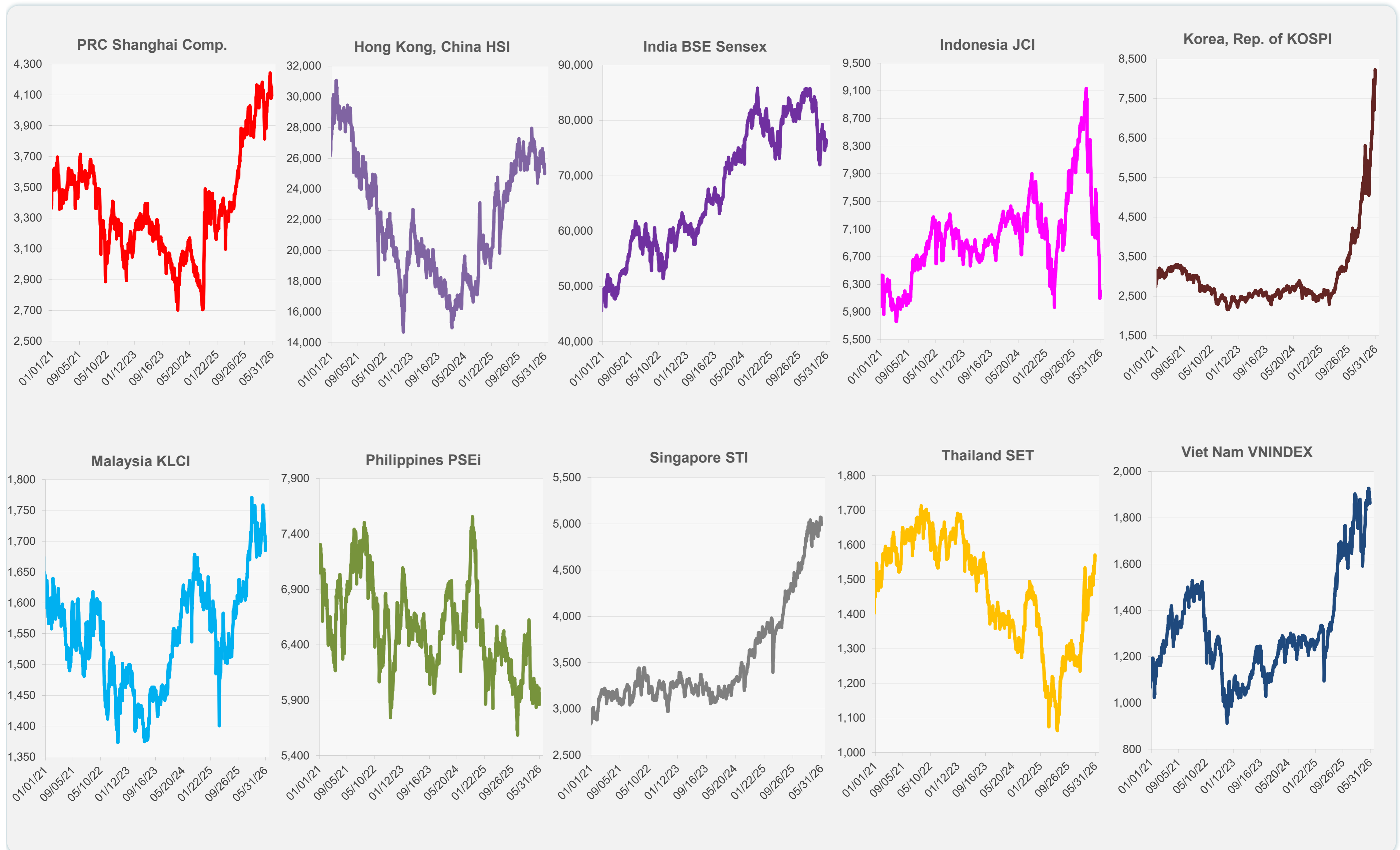
	Latest Closing	% change from Previous Day	% change from 01-Jan-26
US Dow Jones Ind Avg	50,668.97	0.05	5.42
US NASDAQ	26,917.47	0.91	15.81
US S&P 500	7,563.63	0.58	10.49
UK FTSE 100	13,662.75	0.00	21.32
EURO STOXX 50	6,055.11	-0.25	4.55
Japan NIKKEI 225	64,693.12	-0.47	28.51
Bangladesh DSEX	5,264.12	0.00	7.20
PRC Shanghai Comp.	4,098.64	0.12	3.27
Hong Kong, China HSI	25,006.16	-1.27	-2.44
India BSE Sensex	75,867.80	0.00	-10.94
Indonesia JCI	6,130.19	0.00	-29.11
Korea, Rep. of KOSPI	8,185.29	-0.53	94.23
Malaysia KLCI	1,684.93	-0.83	0.29
Pakistan KSE 100	171,908.80	0.00	-2.59
Philippines PSEi	5,859.94	-1.73	-3.19
Singapore STI	4,989.19	-0.79	7.38
Sri Lanka CSEALL	22,199.23	0.00	-1.88
Taipei, China TWSE	43,636.44	-1.40	50.66
Thailand SET	1,568.97	-0.13	24.55
Viet Nam VNINDEX	1,863.67	-0.57	4.44



NIE = Newly Industrialized Economies



Sources: ADB calculations using data from Bloomberg and CEIC Data Company.

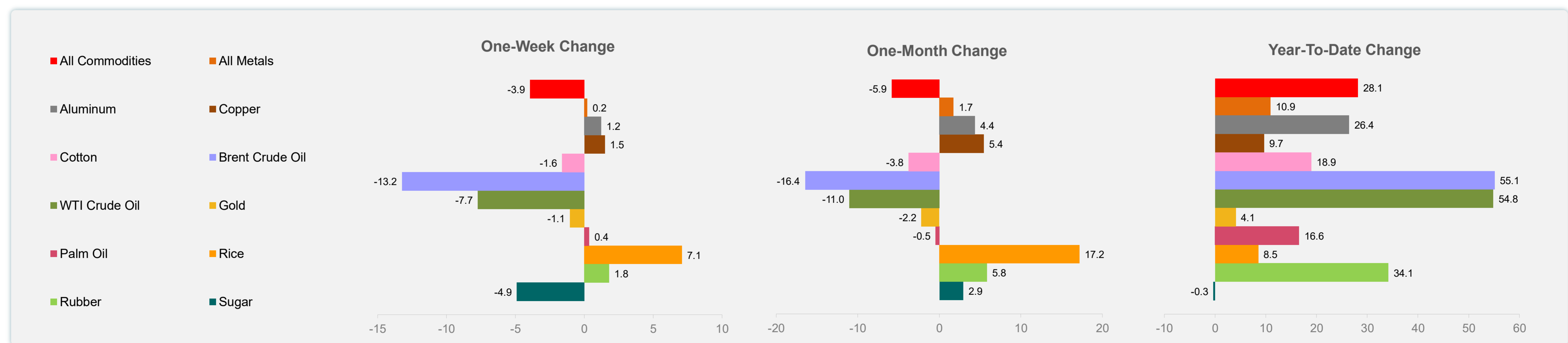
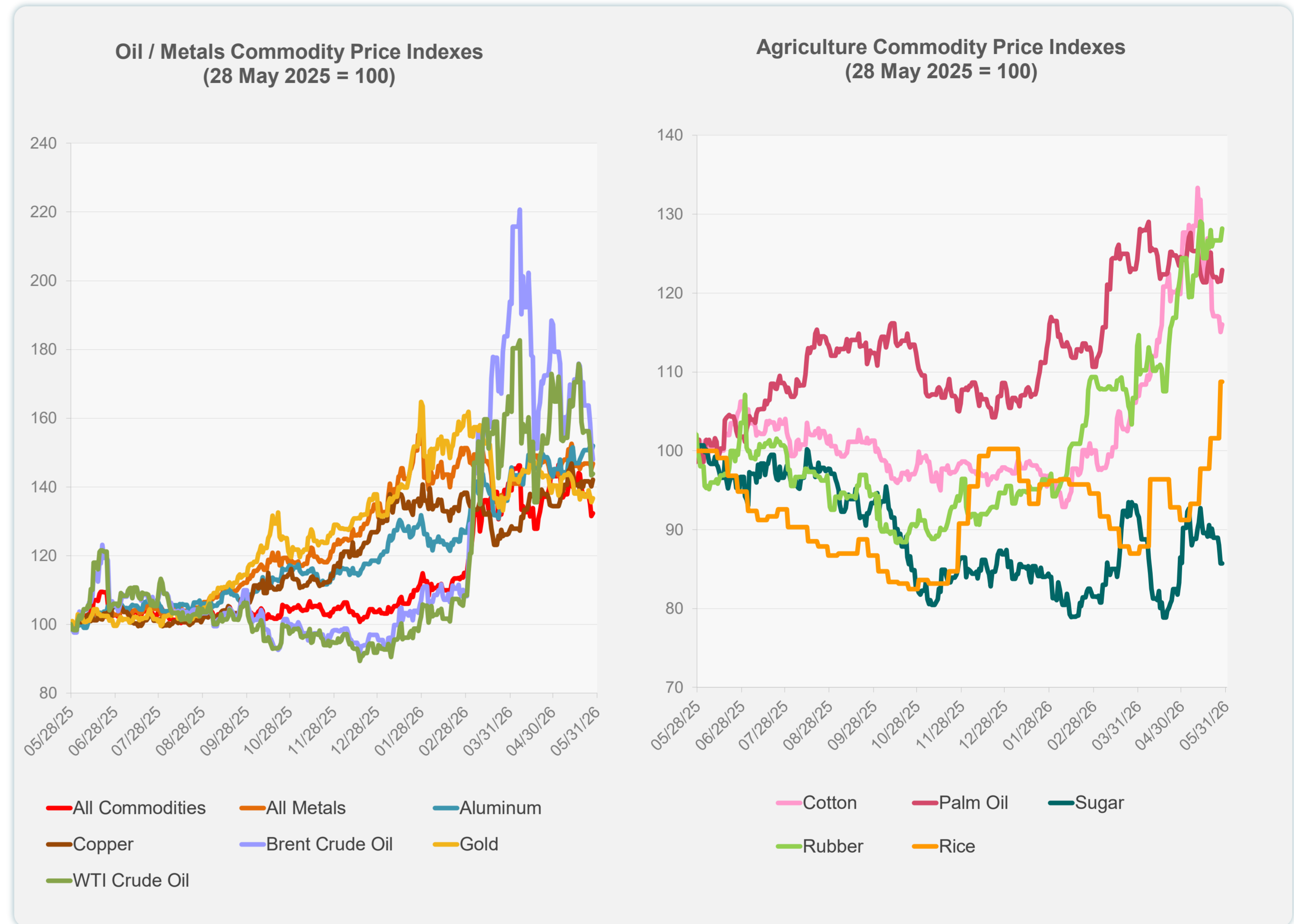


Sources: ADB calculations using data from Bloomberg and CEIC Data Company.

Daily Market Watch
COMMODITY PRICES

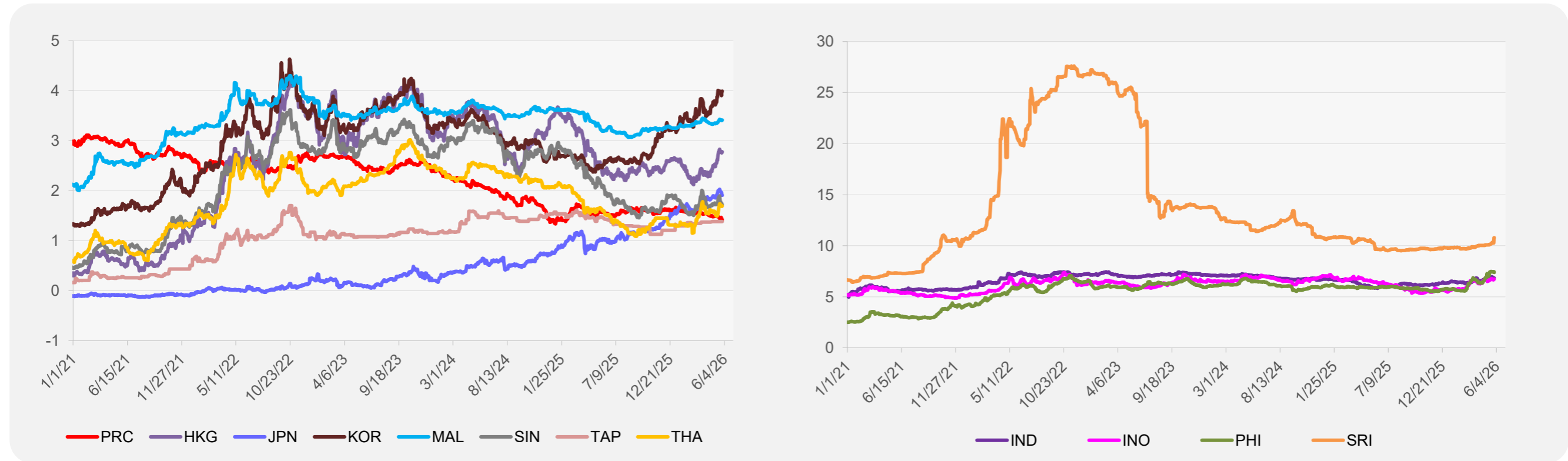
	Unit	Latest Closing	% change from Previous Day	% change from 01-Jan-26
S&P All Commodities	US\$	702.90	0.56	28.15
S&P All Metals	US\$	492.16	1.08	10.91
Aluminum	US\$/metric ton	3,752.03	1.12	26.42
Copper	US\$/metric ton	13,656.19	1.42	9.66
Cotton	US cents/lb	73.77	0.83	18.95
Brent Crude Oil	US\$/barrel	96.84	-2.84	55.08
WTI Crude Oil	US\$/barrel	88.90	0.25	54.82
Gold	US\$/troy oz	4,495.29	0.93	4.07
Palm Oil	US\$/metric tonne	1,129.00	1.12	16.55
Rice ¹	US\$/metric ton	484.00	0.00	8.52
Rubber ²	US\$/kg	288.40	1.19	34.14
Sugar	US cents/lb	14.74	0.00	-0.34

¹ Latest closing price from 27 May 2026.
² Singapore Exchange, Ribbed Smoked Sheet Rubber.

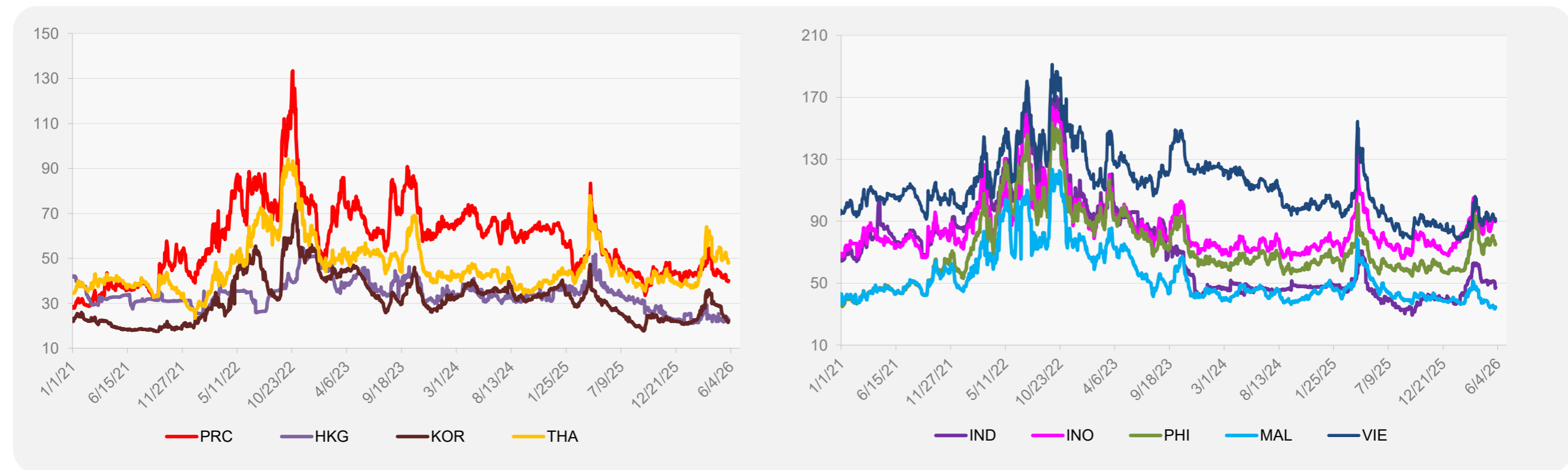


Source: ADB calculations using data from Bloomberg.

5-YEAR LOCAL CURRENCY GOVERNMENT BOND YIELDS (%)



5-YEAR CREDIT DEFAULT SWAP¹



¹ In USD and based on sovereign bonds.
Source: ADB calculations using data from Bloomberg.